

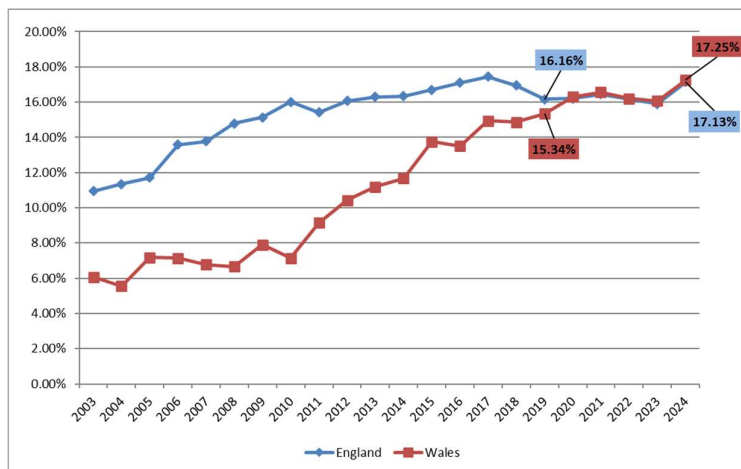
NEWS RELEASE TO SCHOOLS AND COLLEGES, *August 2024*

A record high proportion of A-level Mathematics students awarded A-level Further Mathematics qualifications in Wales

This year Wales has achieved the highest ever proportion of A-level Mathematics students awarded Further Mathematics A-level qualifications, which reached 17.25%. The 2024 result overtakes the pre-pandemic figure of 16.6% achieved in 2019. According to the Joint Council for Qualifications (2024), the number of Mathematics and Further Mathematics qualifications awarded in Wales has grown since 2019:

- A-level Mathematics numbers have increased from 3585 to 3734, a 4% increase;
- A-level Further Mathematics numbers have increased from 550 to 644, a 28% increase;
- AS Mathematics numbers have increased from 3627 to 4819, a 4% increase;
- AS Further Mathematics numbers have increased from 457 to 733, a 60% increase.

Graph 1. Percentages of A-level Mathematics students taking A-level Further Mathematics in England and Wales since 2003 (<https://www.jcq.org.uk/examination-results/>)*



* Comparisons to years 2020-2023 should be approached with caution as due to the pandemic, grades were awarded differently in 2020 and 2021.

AS and A-level grade outcomes also remain strong in Wales in 2024. While during the pandemic the grades were awarded differently, the 2024 results are more in line with the pre-pandemic grades:

- 20.4% of students achieved A* and 47.1% achieved A*/A in A-level Mathematics in 2024 (compared with 19.6% and 45.2% in 2019);
- 31.1% of students achieved A* and 58.2% achieved A*/A in A-level Further Mathematics in 2024 (compared with 33.6% and 60.7% in 2019);
- 34% and 60% of students achieved A in AS-level Mathematics and Further Mathematics respectively in 2024 (compared with 33% and 62.8% in 2019).

Rhaglen Gymorth Mathemateg Cymru / Mathematics Support Programme Wales

Ystafell 103, Ffowndri Gyfrifiadol, Prifysgol Abertawe, Campws y Bae, Abertawe SA1 8EN
Room 103, Computational Foundry, Swansea University, Bay Campus, Swansea SA1 8EN
Cydylynedd Ardal/Area Coordinator: 01792 602793, Gweinyddwr/Administrator: 01792 606609
E-bost/E-mail: rhgmc-mspw@swansea.ac.uk



The MSPW is pleased that many more young people can access Further Mathematics qualifications and progress into higher education. Further Mathematics qualifications remain required or preferred for entering some degree programmes in the UK and a few universities require students to take additional and more advanced examinations in mathematics. Schools can subscribe students to study with MSPW for some or all the modules if this provision is not available in the school.

Jayden Evans from Gowerton Comprehensive School who studied all Further Mathematics modules through MSPW tuition and achieved A*(M) A*(FM) said: *"I felt it really prepared me for uni because working independently is more how it will work in university so I really liked it"*. Jayden will be studying mathematics at the University of Warwick.

Jana Al Maliky who studied the statistics unit with MSPW and achieved A*(M) A(FM) commented: *"I have really enjoyed it, the MSPW lecturer made learning easy."* Jana is preparing to study Medicine at the University of York.

Bryn Peters who graduated from Ysgol Gyfun Gymraeg Bro Myrddin with A*(M) A*(FM) commented on the resources provided by the MSPW: *"Flipped classroom learning in my own time a great help. Integral resources extremely good."* Bryn will be studying Mathematics and Computer Science at the University of Bristol.

The Further Mathematics Support Programme (FMSPW) funded by the Welsh Government was launched in Wales in 2010 and offers teacher professional development courses, online bilingual learning resources, enrichment programmes for KS4 and A-level students as well as live online tuition. The programme was renamed Maths Support Programme Wales in April 2024 to recognise the work that the programme delivered beyond supporting further mathematicians. While retaining its important focus on supporting Further Mathematics, the MSPW will look to offer a variety of support for younger learners, helping them to develop skills, confidence, and passion for mathematics to take further mathematics later in their educational journey should they wish to.

Dr Sofya Lyakhova, MSPW programme leader, said: *"It is very encouraging to see the number of students awarded Further Mathematics qualifications growing. Recent case studies of schools with successful Further Mathematics provision showed that a wealth of MSPW support is used by the schools from enrichment resources, to flipped classroom videos, to exam preparation and teacher professional learning. The programme also offers support towards strengthening mathematics provision 11-16. We welcome the change of name allowing MSPW to grow mathematics and numeracy support in all secondary schools next year."*

Lynne Neagle, Cabinet Secretary for Education said: *"We know just how important maths and numeracy skills are to equip our young people to thrive, now and in their adult lives. Increasing uptake and standards in maths is a key part of our plans to improve education – and it is encouraging to see the highest ever proportion of learners awarded Further Mathematics A-levels in Wales, and the continued work of the Welsh Government backed Mathematics Support Programme Wales in supporting these learners."*

Ariennir RhGMC
MSPW is



a'i reoli gan
and managed by



WIMCS.



Notes for Editors

1. The MSPW (previously known as FMSPW) is funded by the Welsh Government and is managed by Swansea University, Wales Institute of Mathematical and Computational Sciences (WIMCS). FMSPW was founded in 2010 and renamed in April 2024 to recognise the work that the programme delivered beyond supporting further mathematicians. While retaining its important focus on supporting Further Mathematics, the MSPW will look to offer a variety of support for younger learners, helping them to develop skills, confidence and passion for mathematics to take further mathematics later in their educational journey should they wish to.
2. More information regarding the Maths Support Programme Wales can be found at: <https://furthermaths.wales/>. For case studies from students, parents and schools please visit <http://furthermaths.wales/students/studentcs/>.
3. The Wales Institute of Mathematical and Computational Sciences (WIMCS) is a collaborative partnership between the universities of Aberystwyth, Bangor, Cardiff, South Wales and Swansea. It has been set up by the Welsh Government through the Higher Education Funding Council for Wales. WIMCS aims to enhance the standing of Mathematics and Computation in Wales, to foster links with industry, commerce and business, to generate substantial research funding and to provide a forum for education and public awareness of the Mathematical Sciences (www.wimcs.ac.uk).
4. All the figures in the report are based on the data taken from www.jcq.org.uk
5. For more information please contact the MSPW Administrator by email rhgmc-mspw@swansea.ac.uk

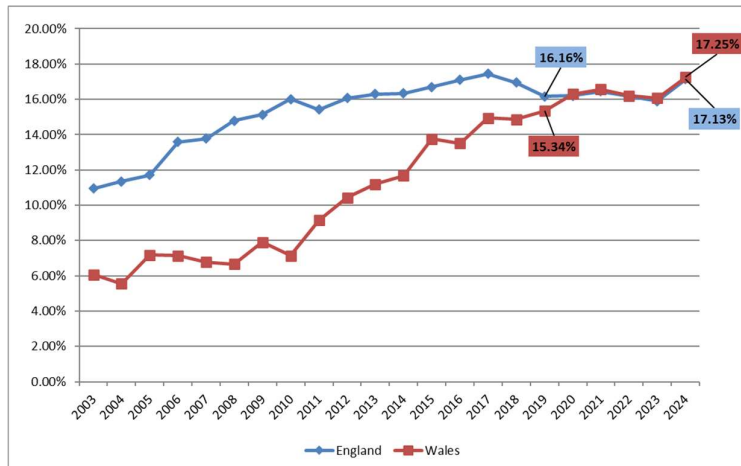
DATGANIAD NEWYDDION I YSGOLION A CHOLEGAU, *Awst 2024*

Dyfarnu'r gyfran uchaf erioed o fyfyrwyr Mathemateg Safon Uwch gyda chymhwyster Mathemateg Bellach Safon Uwch yng Nghymru

Eleni dyfarnwyd y gyfran uchaf erioed o fyfyrwyr Mathemateg Safon Uwch gyda chymhwyster Mathemateg Bellach Safon yng Nghymru, sef 17.25%. Mae canlyniad 2024 yn goddiweddyd y ffigwr cyn-bandemig o 16.6% a gafwyd yn 2019. Yn ôl y Cyd-gyngor Cymwysterau (2024), mae nifer y cymwysterau Mathemateg a Mathemateg Bellach a ddyfarnwyd yng Nghymru wedi cynyddu ers 2019:

- Mae niferoedd Mathemateg Safon Uwch wedi cynyddu o 3585 i 3734, cynnydd o 4%;
- Mae niferoedd Mathemateg Bellach Safon Uwch wedi cynyddu o 550 i 644, cynnydd o 28%;
- Mae niferoedd Mathemateg UG wedi cynyddu o 3627 i 4819, cynnydd o 4%;
- Mae niferoedd Mathemateg Bellach UG wedi cynyddu o 457 i 733, cynnydd o 60%.

Graff 1. Canran y myfyrwyr Mathemateg Safon Uwch sy'n cymryd Mathemateg Bellach Safon Uwch yng Nghymru a Lloegr ers 2003 (<https://www.jcq.org.uk/examination-results/>)*



* Dylid bod yn ofalus wrth gymharu â blynyddoedd 2020-2023 oherwydd y pandemig, a dyfarnwyd graddau'n wahanol yn 2020 a 2021.

Mae canlyniadau graddau UG a Safon Uwch hefyd yn parhau'n gryf yng Nghymru yn 2024. Tra yn ystod y pandemig dyfarnwyd y graddau'n wahanol, mae canlyniadau 2024 yn debycach i'r graddau cyn-bandemig:

- enillodd 20.4% o fyfyrwyr A* a 47.1% A*/A mewn Mathemateg Safon Uwch yn 2024 (o gymharu â 19.6% a 45.2% yn 2019);
- enillodd 31.1% o fyfyrwyr A* a 58.2% A*/A mewn Mathemateg Bellach Safon Uwch yn 2024 (o gymharu â 33.6% a 60.7% yn 2019);
- Cyflawnodd 34% a 60% o fyfyrwyr A mewn Mathemateg lefel UG a Mathemateg Bellach yn y drefn honno yn 2024 (o gymharu â 33% a 62.8% yn 2019).

Mae RhGMC yn falch bod llawer mwy o bobl ifanc yn gallu cael mynediad at gymwysterau Mathemateg Bellach a symud ymlaen i addysg uwch. Mae cymwysterau Mathemateg Bellach yn parhau i fod yn ofynnol neu'n cael eu ffafrio ar gyfer cael mynediad i rai pynciau gradd yn y DU ac mae'n ofynnol mewn rhai prifysgolion bod myfyrwyr yn sefyll arholiadau ychwanegol ac uwch mewn mathemateg. Gall ysgolion danysgrifio i fyfyrwyr astudio gyda RhGMC ar gyfer rhai neu'r cyfan o'r modiwlau os nad yw'r ddarpariaeth hon ar gael yn yr ysgol.

Dywedodd Jayden Evans o Ysgol Gyfun Gowerton a astudiodd yr holl fodiwlau Mathemateg Bellach trwy hyfforddiant RhGMC a chael A*(M) A*(MB): *“Roeddwn i'n teimlo ei fod wedi fy mharatoi ar gyfer y brifysgol oherwydd mae gweithio'n annibynnol yn fwy fel y bydd yn gweithio yn y brifysgol felly roeddwn i'n ei hoffi'n fawr”*. Bydd Jayden yn astudio mathemateg ym Mhrifysgol Warwick.

Dywedodd Jana Al Maliky a astudiodd yr uned ystadegaeth gyda RhGMC ac a enillodd A*(M) A*(MB): *“Rwyf wedi mwynhau'n fawr, gwnaeth darlithydd RhGMC y dysgu'n hawdd.”* Mae Jana yn paratoi i astudio Meddygaeth ym Mhrifysgol Efrog.

Gwnaeth Bryn Peters, a raddiodd o Ysgol Gyfun Gymraeg Bro Myrddin gydag A*(M) A*(MB) sylw am yr adnoddau a ddarparwyd gan RhGMC: *“Roedd dysgu o adnoddau dosbarth wyneb i waered yn fy amser fy hun yn help mawr. Adnoddau Integral yn hynod o dda.”* Bydd Bryn yn astudio Mathemateg a Chyfrifiadureg ym Mhrifysgol Bryste.

Lansiwyd Rhaglen Gymorth Mathemateg Bellach (RhGMBC) a ariennir gan Lywodraeth Cymru, yng Nghymru yn 2010 ac mae'n cynnig cyrsiau datblygiad proffesiynol i athrawon, adnoddau dysgu dwyieithog ar-lein, rhaglenni cyfoethogi ar gyfer myfyrwyr CA4 a Safon Uwch yn ogystal â hyfforddiant byw ar-lein. Cafodd y rhaglen ei hailenwi'n Rhaglen Gymorth Mathemateg Cymru ym mis Ebrill 2024 i gydnabod y gwaith a gyflawnwyd gan y rhaglen y tu hwnt i gefnogi mathemategwyr pellach. Wrth gadw ei ffocws pwysig ar gefnogi Mathemateg Bellach, bydd RhGMC yn ceisio cynnig amrywiaeth o gefnogaeth i ddysgwyr iau, gan eu helpu i ddatblygu sgiliau, hyder, ac angerdd am fathemateg i gymryd mathemateg bellach yn ddiweddarach yn eu taith addysgol os dymunant wneud hynny.

Dywedodd Dr Sofya Lyakhova, arweinydd rhaglen RhGMC: *“Mae'n galonogol iawn gweld nifer y myfyrwyr sy'n ennill cymwysterau Mathemateg Bellach yn tyfu. Dangosodd astudiaethau achos diweddar o ysgolion gyda darpariaeth Mathemateg Bellach lwyddiannus fod yr ysgolion yn defnyddio cyfoeth o gefnogaeth RhGMC o adnoddau cyfoethogi, i fideos ystafell ddosbarth wyneb i waered, i baratoi ar gyfer arholiadau ac addysg broffesiynol i athrawon. Mae'r rhaglen hefyd yn cynnig cymorth tuag at gryfhau darpariaeth mathemateg 11-16. Rydym yn croesawu'r newid enw sy'n caniatáu i RhGMC i ehangu cymorth mathemateg a rhifedd ym mhob ysgol uwchradd y flwyddyn nesaf.”*

Dywedodd Lynne Neagle, Ysgrifennydd y Cabinet dros Addysg: *“Rydym yn gwybod pa mor bwysig yw sgiliau mathemateg a rhifedd i arfogi ein pobl ifanc i ffynnu, nawr ac yn eu bywydau fel oedolion. Mae cynyddu niferoedd a safonau mathemateg yn rhan allweddol o'n cynlluniau i wella addysg – ac mae'n galonogol gweld y gyfran uchaf erioed o ddysgwyr yn llwyddo mewn Mathemateg Bellach Safon Uwch yng Nghymru, a gwaith parhaus Rhaglen Gymorth Mathemateg Cymru, a gefnogir gan Lywodraeth Cymru, i gefnogi'r dysgwyr hyn.”*



Nodiadau i Olygyddion

1. Ariennir RhGMC (a elwid yn flaenorol yn RhGMBC) gan Lywodraeth Cymru ac fe'i rheolir gan Brifysgol Abertawe, Sefydliad Gwyddorau Mathemategol a Chyfrifiadurol Cymru (WIMCS). Sefydlwyd RhGMBC yn 2010 ac fe'i hailenwyd ym mis Ebrill 2024 i gydnabod y gwaith a gyflawnwyd gan y rhaglen y tu hwnt i gefnogi mathemategwyr pellach. Wrth gadw ei ffocws pwysig ar gefnogi Mathemateg Bellach, bydd RhGMC yn ceisio cynnig amrywiaeth o gefnogaeth i ddysgwyr iau, gan eu helpu i ddatblygu sgiliau, hyder ac angerdd am fathemateg i gymryd mathemateg bellach yn ddiweddarach yn eu taith addysgol os dymunant.
2. Mae rhagor o wybodaeth am Raglen Gymorth Mathemateg Cymru ar gael o: <https://furthermaths.wales/cy/>. Am astudiaethau achos gan fyfyrwyr, rhieni ac ysgolion ewch i [Astudiaethau Achos](#)
3. Mae Sefydliad Gwyddorau Mathemategol a Chyfrifiadurol Cymru (WIMCS) yn bartneriaeth gydweithredol rhwng prifysgolion Aberystwyth, Bangor, Caerdydd, De Cymru ac Abertawe. Fe'i sefydlwyd gan Lywodraeth Cymru drwy Gyngor Cyllido Addysg Uwch Cymru. Nod WIMCS yw gwella statws Mathemateg a Chyfrifiadureg yng Nghymru, meithrin cysylltiadau â diwydiant, masnach a busnes, cynhyrchu cyllid ymchwil sylweddol a darparu fforwm ar gyfer addysg ac ymwybyddiaeth gyhoeddus o'r Gwyddorau Mathemategol (www.wimcs.ac.uk).
4. Mae'r holl ffigurau yn yr adroddiad yn seiliedig ar y data a gymerwyd o www.jcq.org.uk
5. Am ragor o wybodaeth cysylltwch â Gweinyddwr RhGMC drwy e-bost rhgmc-mspw@swansea.ac.uk