

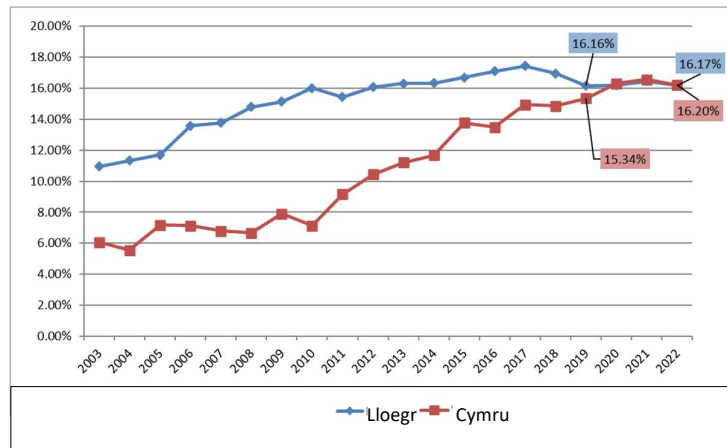
## DATGANIAD NEWYDDION I YSGOLION A CHOLEGAU, *Awst 2022*

### Dathlu Safon Uwch Mathemateg a Mathemateg Bellach yng Nghymru

Mae Cymru'n dathlu blwyddyn arall o lwyddiant gyda niferoedd myfyrwyr Mathemateg Safon Uwch a Mathemateg Bellach yn parhau i fod yn uchel yn 2022. Yn ôl y Cydgyngor Cymwysterau (2022) mae nifer y cymwysterau Mathemateg a Mathemateg Bellach a ddyfarnwyd yng Nghymru wedi tyfu ers 2019:

- Mae niferoedd Mathemateg Safon Uwch wedi cynyddu o 3585 i 3796, cynnydd o 6%;
- Safon Uwch Mae niferoedd Mathemateg Bellach wedi cynyddu o 550 i 615, cynnydd o 12%.

**Graff 1.** Canrannau myfyrwyr Mathemateg Safon Uwch sy'n cymryd Mathemateg Bellach Safon Uwch yng Nghymru a Lloegr ers 2003 (<https://www.jcq.org.uk/examination-results/>)\*



\*- Dylid ymdrin â chymariaethau â'r blynyddoedd blaenorol yn ofalus oherwydd y pandemig, dyfarnwyd graddau'n wahanol yn ystod 2020 a 2021.

Mae canlyniadau graddau UG a Safon Uwch yn parhau'n gryf yng Nghymru hefyd yn 2022:

- Roedd 33.1% o fyfyrwyr wedi cael A\* a 57.7% wedi cael A\*/A ym Mathemateg Safon Uwch;
- Cafodd 53.5% o fyfyrwyr A\* a 74.8% raddau A\*/A ym Mathemateg Bellach Lefel A;
- Cafodd 44% a 59.9% o fyfyrwyr A ym Mathemateg Lefel-UG a Mathemateg Bellach yn ôl eu trefn.

Mae'r RhGMBC yn falch y gall llawer mwy o bobl ifanc gael mynediad at gymwysterau Mathemateg Bellach a symud ymlaen i addysg uwch. Mae cymwysterau Mathemateg Bellach yn angenrheidiol

neu'n ffafriol o hyd ar gyfer cael mynediad i rai rhaglenni gradd yn y DU ac mae ambell brifysgol yn gofyn i fyfyrwyr sefyll arholiadau ychwanegol ac uwch ym mathemateg.

Dyweddod Daniel Narain, myfyriwr o Ysgol Gyfun Penglais a gafodd A\* mewn Mathemateg Safon Uwch a Mathemateg Bellach ac sy'n mynd i Rydychen i ddarllen Ffiseg: *"Mae rhaglen RhGMBC wedi bod yn amhrisiadwy i fy addysg yn ystod fy lefel A. Mae'r gwersi yn gryno ac yn fanwl, gyda llawer o arweiniad drwy gwestiynau arholiad, gan sicrhau eich bod yn gwybod popeth mae'r arholwyr yn chwilio amdano. Mae RhGMBC wedi helpu'n aruthrol i sicrhau fy lle ar gyfer Ffiseg yn Rhydychen, trwy eu fideos ychwanegol ar YouTube (SUMP) a'u cwrs paratoi MAT (er i mi eistedd y PAT). Maent bob amser wedi bod yn gyflym i ymateb i unrhyw ymholiadau a bob amser yn ddefnyddiol yn eu hadborth ar waith. Alla i ddim diolch digon iddyn nhw am yr holl help."*

Dyweddod Katy Knoyl, a fynychodd Ysgol Plasmawr ac a enillodd raddau A\* mewn Mathemateg a Mathemateg Bellach ac a fydd yn dechrau ar radd Peirianeg Gemegol yng Ngholeg Imperial Llundain: *"Roedd angen i mi astudio Mathemateg Bellach i fynd i Goleg Imperial. Heb RhGMBC ni fyddwn wedi gallu astudio Mathemateg Bellach. Diolch o galon i bawb, yn enwedig tiwtoriaid mathemateg pur bellach a esboniodd bopeth yn wych, helpodd fi a rhoi'r hyder i mi astudio Mathemateg Bellach a mynd ymlaen i'r brifysgol."*

Dyweddod Owain Griffiths, sydd hefyd o Ysgol Plasmawr, a gyflawnodd A\* mewn Mathemateg a Mathemateg Bellach: *"Rwy'n mynd i Ysgol Economeg Llundain i astudio Mathemateg ac Economeg. Rwy'n teimlo fel pe bai RhGMBC yn ein paratoi'n dda ar gyfer yr arholiadau yn enwedig gyda phapurau ymarfer RhGMBC - fe wnaethon nhw helpu'n aruthrol gyda'r gwaith paratoi, nid yn unig ym Mathemateg Bellach ond hefyd mewn mathemateg Safon Uwch arferol."*

Cafodd y Rhaglen Gymorth Mathemateg Bellach (FMSPW) a ariennir gan Lywodraeth Cymru ei lansio yng Nghymru yn 2010 ac mae'n cynnig cyrsiau datblygiad proffesiynol athrawon, adnoddau dysgu dwyieithog ar-lein, rhaglenni cyfoethogi ar gyfer myfyrwyr CA4 a Safon Uwch yn ogystal â dysgu ar-lein byw. Dyweddod Dr Sofya Lyakhova, arweinydd rhaglen RhGMBC: *"Da iawn chi i bob myfyriwr, athro ac ysgol a choleg ar gwblhau eu canlyniadau Mathemateg a Mathemateg Bellach yn llwyddiannus. Mae'n braf iawn gweld bod niferoedd y myfyrwyr sy'n cwblhau Mathemateg Bellach yn parhau'n uchel. Mae myfyrwyr sy'n astudio Mathemateg Bellach wedi'u paratoi yn dda i astudio amrywiaeth o raddau sy'n llawn mathemateg ac mae graddedigion RhGMBC yn mynd ymlaen i astudio Mathemateg, Ffiseg, Peirianeg a phynciau STEM eraill bob blwyddyn."*

Er mwyn helpu myfyrwyr ac ysgolion oedd yn addasu i amgylchiadau heriol yn ystod y pandemig ac i baratoi ar gyfer arholiadau 2022, cafodd llawer o ddeunyddiau paratoi Newydd at arholiadau eu cynllunio a'u rhyddhau. Ychwanegiad newydd at bortffolio RhGMBC yn ystod blwyddyn academaidd 2022/23 yn Gwella+ lle bydd RhGMBC yn gweithio gydag ysgolion dethol i wneud astudio mathemateg hyd yn oed yn fwy amrywiol a diddorol yn eu hysgolion.

Dyweddod Gweinidog y Gymraeg ac Addysg, Jeremy Miles: *"Rwy'n falch o weld canlyniadau positif ar gyfer Mathemateg a Mathemateg Bellach eleni ac mae yna dwf cyson yn parhau o'i gymharu â chanlyniadau cyn y pandemig. Mae cyllid Llywodraeth Cymru ar gyfer y Rhaglen*

## Rhaglen Gymorth Mathemateg Bellach Cymru / Further Mathematics Support Programme Wales

Ystafell 103, Ffowndri Gyfrifiadol, Prifysgol Abertawe, Campws y Bae, Abertawe SA1 8EN  
Room 103, Computational Foundry, Swansea University, Bay Campus, Swansea SA1 8EN  
Cydlynnydd Ardal/Area Coordinator: 01792 602793, Gweinyddwr/Administrator: 01792 606609  
E-bost/E-mail: [fmpswales@swansea.ac.uk](mailto:fmpswales@swansea.ac.uk)

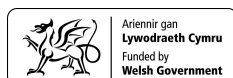


*Gymorth Mathemateg Bellach yn helpu i gyflawni gwaith gwerthfawr o ran meithrin cyfranogiad parhaus a chyrhaeddiad mewn Mathemateg ymhlith dysgwyr. Mae'r canlyniadau hyn yn rhoi gwaelodlin bositif i ni ar gyfer perfformiad mathemateg wrth i ni symud tuag at weithredu Cwricwlwm Cymru."*

## Nodiadau i olygyddion

1. Ariennir y RhGMBC gan Lywodraeth Cymru a chaiff ei rheoli gan Brifysgol Abertawe, y Sefydliad Gwyddorau Cyfrifiadurol a Mathemategol Cymru (WIMICS).
2. Gellir cael mwy o wybodaeth ynglyn â Rhaglen Gymorth Mathemateg Bellach Cymru wrth: <http://furthermaths.wales/>. Ar gyfer astudiaethau achos gan fyfyrwyr, rhieni ac ysgolion ewch os gwelwch yn dda i <http://furthermaths.wales/students/studentcs/>
3. Mae'r Sefydliad Gwyddorau Cyfrifiadurol a Mathemategol Cymru (WIMCS) yn bartneriaeth gydweithredol rhwng prifysgolion Aberystwyth, Bangor, Caerdydd, De Cymru ac Abertawe. Cafodd ei sefydlu gan Lywodraeth Cymru drwy Gyngor Cyllido Addysg Uwch Cymru. Nod WIMCS yw gwella statws Mathemateg a Chyfrifiant yng Nghymru, er mwyn meithrin cysylltiadau â diwydiant, masnach a busnes, er mwyn cynhyrchu cyllid ymchwil sylweddol a darparu fforwm ar gyfer addysg ac ymwybyddiaeth y cyhoedd o'r Gwyddorau Mathemategol ([www.wimcs.ac.uk](http://www.wimcs.ac.uk)).
4. Mae'r holl ffigyrau yn yr adroddiad yn seiliedig ar y data a gymerwyd o [www.jcq.org.uk](http://www.jcq.org.uk)
5. Am ragor o wybodaeth cysylltwch â Gweinyddwr RhGMB Cymru trwy e-bost [fmpswales@swansea.ac.uk](mailto:fmpswales@swansea.ac.uk)

Ariannir RhGMB  
Cymru gan  
FMSW Wales is  
funded by



Rheolir gan  
Managed by



Mewn partneriaeth â  
In partnership with



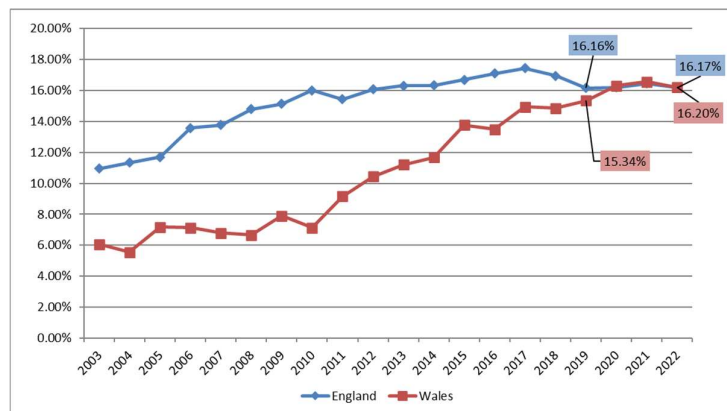
## NEWS RELEASE TO SCHOOLS AND COLLEGES, *August 2022*

### Celebrating A-level Mathematics and Further Mathematics in Wales

Wales is celebrating another year of success with the numbers of A-level Mathematics and Further Mathematics students remaining high in 2022. According to the Joint Council for Qualifications (2022) the number of Mathematics and Further Mathematics qualifications awarded in Wales has grown since 2019:

- A-level Mathematics numbers have increased from 3585 to 3796, a 6% increase;
- A-level Further Mathematics numbers have increased from 550 to 615, a 12% increase.

**Graph 1.** Percentages of A-level Mathematics students taking A-level Further Mathematics in England and Wales since 2003 (<https://www.jcq.org.uk/examination-results/>)\*



\*- Comparisons to previous years should be approached with caution as due to the pandemic, grades were awarded differently in 2020 and 2021.

AS and A-level grade outcomes also remain strong in Wales in 2022:

- 33.1% students achieved A\* and 57.7% achieved A\*/A in A-level Mathematics;
- 53.5% students achieved A\* and 74.8% achieved A\*/A in A-level Further Mathematics;
- 44% and 59.9% students A in respectively AS-level Mathematics and Further Mathematics.

The FMSPW is pleased that many more young people can access Further Mathematics qualifications and progress into higher education. Further Mathematics qualifications remain required or preferred for entering some degree programmes in the UK and a few universities require students to take additional and more advanced examinations in mathematics.

Daniel Narain, a student from Penglais Comprehensive School who achieved A\* in A-level Mathematics and Further Mathematics and is heading to Oxford to read Physics, said: “*The FMSPW programme has been invaluable for my education during my A levels. The lessons are*

## Rhaglen Gymorth Mathemateg Bellach Cymru / Further Mathematics Support Programme Wales

Ystafell 103, Ffowndri Gyfrifiadol, Prifysgol Abertawe, Campws y Bae, Abertawe SA1 8EN  
Room 103, Computational Foundry, Swansea University, Bay Campus, Swansea SA1 8EN  
Cydlynnydd Ardal/Area Coordinator: 01792 602793, Gweinyddwr/Administrator: 01792 606609  
E-bost/E-mail: [fmpswales@swansea.ac.uk](mailto:fmpswales@swansea.ac.uk)



*concise and in-depth, with lots of guidance through exam questions, ensuring you know everything the examiners are looking for. FMSPW has massively helped with securing my place for Physics at Oxford, through their extra videos on YouTube (SUMP) and their MAT preparation course (although I sat the PAT). They have always been quick to respond to any queries and always helpful in their feedback on work. I can't thank them enough for all the help."*

Katy Knoyl, who attended Ysgol Plasmawr and achieved grades A\* in Mathematics and Further Mathematics and will start a Chemical Engineering degree in Imperial College London, said: *"I needed to study Further Maths to get into Imperial College. Without FMSPW I wouldn't have been able to study Further Maths. A massive thank you to everyone, especially further pure mathematics tutors who explained everything brilliantly, helped me and gave me the confidence to study Further Maths and go onto university."*

Owain Griffiths, also from Ysgol Plasmawr, who achieved A\* in Mathematics and Further Mathematics said: *"I'm going to the London School of Economics to study maths and economics. I feel as if FMSPW prepared us well for the exams especially with the FMSPW practice papers - they massively helped with preparation, not only in the Further Maths but also in normal A-level maths."*

The Further Mathematics Support Programme (FMSPW) funded by the Welsh Government was launched in Wales in 2010 and offers teacher professional development courses, online bilingual learning resources, enrichment programmes for KS4 and A-level students as well as live online tuition. Dr Sofya Lyakhova, FMSPW programme leader, said: *"Well done to all students, teachers and schools and colleges on the successful completion of their Mathematics and Further Mathematics results. It is very pleasing to see that the numbers of students completing Further Mathematics remain high. Students that study Further Mathematics are well prepared to study a variety of mathematics-rich degrees and FMSPW graduates go on to study Mathematics, Physics, Engineering and other STEM subjects every year."*

To help adapting students and schools to challenging circumstances during the pandemic and to prepare for 2022 exams, many new exam preparation materials were designed and released. A new addition to the FMSPW portfolio in 2022/23 academic year will be Enhance+ programme where FMSPW will be working with selected schools to make the study of mathematics even more diverse and interesting in their schools.

The Minister for Education and Welsh Language, Jeremy Miles, said: *"I'm pleased to see positive results for Maths and further Maths this year and there remains a steady growth in comparison to results prior to the pandemic. Welsh Government funding for the Further Mathematics Support Programme is helping to deliver valuable work in fostering sustained participation and attainment in Maths among learners. "These results give us a positive baseline for mathematics performance as we move towards the implementation of the Curriculum for Wales."*

Ariannir RhGMB  
Cymru gan  
FMPSP Wales is  
funded by



Rheolir gan  
Managed by



Mewn partneriaeth â  
In partnership with



